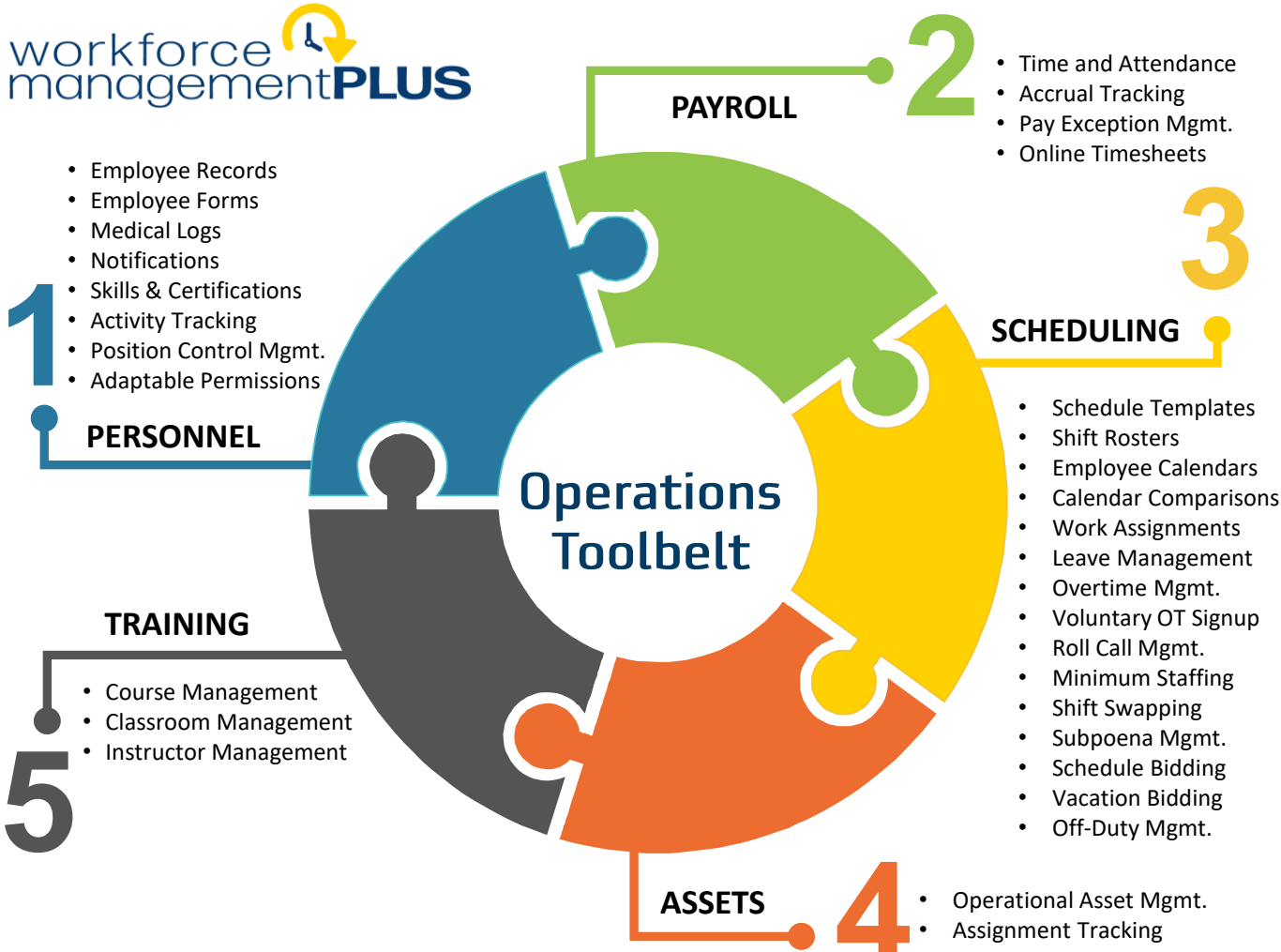









# workforce management**PLUS**



 <p>Manage comprehensive employee information and control capabilities using adaptive role-based permission levels.</p>	 <p>Save time and increase accuracy of complex pay exception calculations that ERP and payroll systems simply can't support.</p>	 <p>Ensure continuously changing staffing assignments comply with safety policies and minimize overtime cost.</p>	 <p>Enable real-time awareness of operational equipment assignments in-use as part of staffing rosters.</p>	 <p>Coordinate curriculum-based training events with employee schedules and centralize results reporting.</p>
---	---	--	---	--