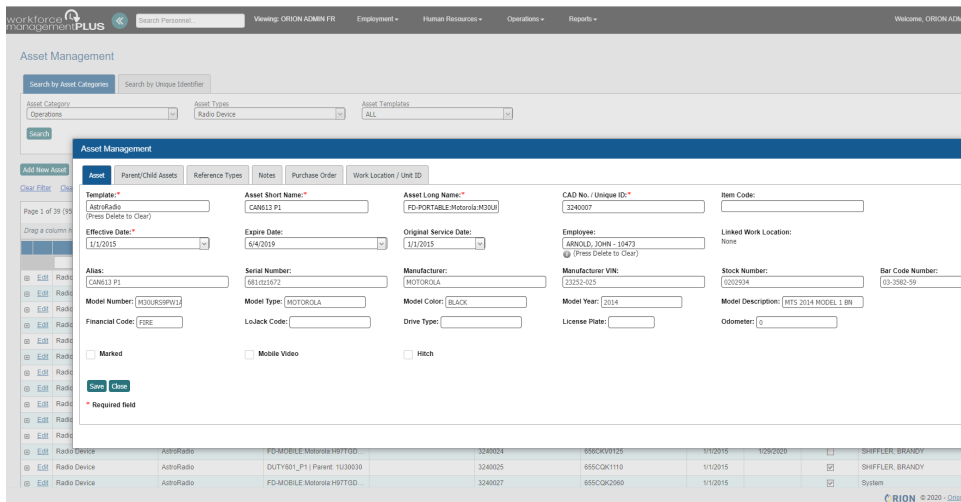


From weapons and protective gear to vehicles and radios, manually tracking the thousands of operational assets used daily by public safety personnel can be labor intense. Tracking inventory details, along with issuance and returns on spreadsheets not only waste time, but often results in errors or lost items. The Workforce Management PLUS Equipment Management module simplifies equipment assignments for personnel, units or work locations.

► **TRACK COMPREHENSIVE EQUIPMENT INFORMATION**

With the Workforce Management PLUS Equipment Management module, each item's details include a wide range of information such as serial, stock and bar code numbers, financial codes and effective/expiration dates. Comprehensive purchase order details, such vendor information, pricing, warranty and return details are included. Interfaces with barcode scanner devices enables tracking assets quickly and efficiently.



BENEFITS

- Saves time and improves tracking of issuances/returns
- Increases inventory control
- Improves assignment accountability
- Increases efficiencies with equipment assignment viewing in CAD systems for integrated systems

► **CONTROL ASSET TRACKING IN REAL-TIME**

Track an unlimited number of asset inventory items, including each item's issuances and returns by personnel, units or work locations. Equipment data can be imported or manually entered and/or edited by authorized personnel. Equipment can be organized based on defined categories and types. Attributes can be associated to items that can control assignments by location, user group or owner type.

CONTACT US AT 866-779-1689.



FEATURES

- View current and historical employee assignments
- Assign assets to:
 - » Employees
 - » Work assignments
 - » Work locations
 - » Dispatched units (with CAD integrations)
- Track unlimited number of operational assets with:
 - » Purchasing info
 - » Cost data
 - » Parent/child relationships
- Associate assets with capabilities by locations or user groups
- Search for equipment using multiple filters
- Enter asset notes
- Apply organization or funding assignment restrictions
- Track out-of-service equipment assignments and replacements
- Integrate and export asset assignments to CAD
- Supports bar code technology
- Audit reporting
- Role-based access controls

► ENSURE THE RIGHT ASSETS ARE IN THE RIGHT HANDS

Once entered, equipment can be categorized into parent-child relationships. As a result, entire equipment groups can be assigned to employees, work assignments or work locations. Items assigned to personnel include name, date and time stamps for auditing purposes. Automatic alerts to supervisors are included, insuring equipment oversight and cost control.

Template Type	Template Name	Asset Summary	Item Code	CAD No./Unique ID	Serial Number	Effective Date	Expirs Date	Active	Modified By
VehicleListType	FTRUCK	C10956		C10956	XLC-4287	6/4/2019		<input checked="" type="checkbox"/>	AlphaAssetAPI
VehicleListType	FTRUCK	92-133037	C699C	U30307	XHR-0643	6/4/2019	6/4/2019	<input checked="" type="checkbox"/>	AlphaAssetAPI
VehicleListType	FTRUCK	-31634	F3602	31634	VON-9941	6/4/2019		<input checked="" type="checkbox"/>	AlphaAssetAPI
VehicleListType	FTRUCK	59-1279901	JET825	1279901	VA193AAZ	6/4/2019		<input checked="" type="checkbox"/>	AlphaAssetAPI
VehicleListType	FTRUCK	U31831	UTILITY 619	U31831	U31831	1/1/2019		<input checked="" type="checkbox"/>	TORRES, THOMAS
VehicleListType	FTRUCK	Transport Unit UNID: A812B	A812B	1A40009	EV9882	1/1/2015		<input checked="" type="checkbox"/>	AlphaAssetAPI
VehicleListType	FTRUCK	Transport Unit UNID: A814C	A814C-A814C-A8	1A40017	EV9601	1/1/2015		<input checked="" type="checkbox"/>	AlphaAssetAPI
VehicleListType	FTRUCK	60-1U31903	SV609	1U31903	EV3805	9/4/2019		<input checked="" type="checkbox"/>	AlphaAssetAPI
VehicleListType	FTRUCK	60-1U11902	AL5025	1U11902	EV3759	7/19/2019		<input checked="" type="checkbox"/>	AlphaAssetAPI
VehicleListType	FTRUCK	60-1U11901	AL5015	1U11901	EV3768	12/22/2019		<input checked="" type="checkbox"/>	AlphaAssetAPI
VehicleListType	FTRUCK	92-1C11901	C606	1C11901	EV3761	6/4/2019		<input checked="" type="checkbox"/>	AlphaAssetAPI
VehicleListType	FTRUCK	76-1A41803	M825B	1A41803	EV3749	6/4/2019		<input checked="" type="checkbox"/>	AlphaAssetAPI
VehicleListType	FTRUCK	92-1U31902	AC606	1U31902	EV3739	6/4/2019		<input checked="" type="checkbox"/>	AlphaAssetAPI

► INCREASE CAD EFFICIENCIES FOR DISPATCHERS

When integrated with CAD systems for rostering purposes, CAD systems can be setup to automatically receive real-time updates regarding assignments and equipment capabilities -- including vehicle and radio information. Any equipment placed out-of-service in the *WMP Equipment Management* module is automatically updated in CAD and includes its replacement.



CERTIFIED WOMEN OWNED BUSINESS

Orion and the Workforce Management PLUS logos are trademarks of Orion Communications. All rights reserved. © Orion Communications, Inc. 2020. All other product names are trademarks of their respective owners.